

Technical data sheet

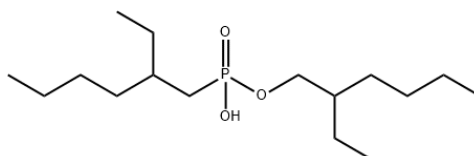
2-ethylhexyl 2-ethylhexyl phosphate (P507)

■ **CAS No.:**14802-03-0

■ **Molecular formula:**(C₈H₁₇)₂PO₃H

■ **Molecular weight:**306.4 (International Atomic Weight Table,1987)

■ **Molecular structure:**



■ **Properties:**Colorless or yellowish transparent viscous oily liquid,soluble to alcohol,benzene, acetone and some-other organic solvents,no soluble to water.Low poison.Burning point:228℃.

■ **Uses:**It is a kind of acid phosphorous-type extracting agent,widely used as extracting agent for non-ferrous and rare earth metals.

■ **Package:**200kg /plastic drum net each.1000L/IBC drum.

■ **Storage and transportation:**Handle with care,no vigorous strike is permitted.Deposited in shady,airy and dry warehouse.Keep away from fire and rain.

■ **Quality index:**

Item	Specific grade	Export grade	Industrial grade
Purity, %	≥97.0	≥95.0	≥93.0
Diacid, %	≤1.6	≤2.0	≤2.4
Phase separation speed (S)	≤60	≤90	≤120
Acid value (mg KOH/g)	180~195		180±5
Density (20℃)g/mL	0.940—0.960		0.930—0.960
Viscosity (cp) 25℃ mm ² /s	36±3		----
Flash point (open cup)℃	170±3		----
Refractive index (N _D ²⁰)	1.4480—1.4520		----
Monometallic impurity,(ppm)	below 60 according to client demand		----