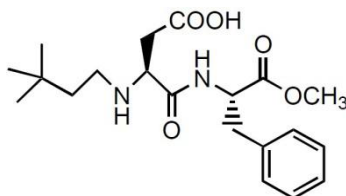


NEOTAME

PRODUCT DATA SHEET

SYNONYMS	INS No. 961
DEFINITION	Neotame is manufactured in single process in which aspartame and 3,3-dimethylbutyraldehyde are reacted together in a methanol solution in the presence of hydrogen. Neotame is isolated by removal of methanol, followed by washing and drying.
CHEMICAL NAME	N-[N-(3,3-Dimethylbutyl)-L- α -aspartyl]- L-phenylalanine 1-methyl ester
C.A.S. NUMBER	165450-17-9
E. NUMBER	E.961
CHEMICAL FORMULA	C ₂₀ H ₃₀ N ₂ O ₅

STRUCTURAL FORMULA



FORMULA WEIGHT	378.47
FUNCTIONAL USES	Non-nutritive Sweetener, Flavour enhancer
CHARACTERISTIC	ACCEPTANCE LIMIT TEST METHOD
Apperance	White to off-White powder Visual
Parameters for Identification	Conforms USP/FCC10/GB
Assay, anhydrous basis	97.0% - 102.0% USP/FCC10
N-[N-(3,3-Dimethylbutyl)- α -aspartyl]-L-phenylalanine	NMT 1.5% USP/FCC10
Other related substances	NMT 2.0% USP/FCC10
pH, 0.5% solution	5.0 - 7.0 USP/FCC10
Water, 25 \pm 5mg	NMT 5.0% USP/FCC10
Sulfated ash	NMT 0.2% USP/FCC10
Specific rotation, [α] ²⁰ _D 0.5% solution, on dry basis	-40.0° TO -43.4° USP/FCC10
Melting range	81 °C - 84 °C GB/T 617-2006

WuHan HuaSweet Co.,Ltd

Pb	NMT 1mg/kg	USP/FCC10
Total aerobic bacteria	NMT 250CFU/g	GB4789.2-2016
Coliforms	NMT 10MPN/g	GB4789.3-2016
Fungi	NMT 100CFU/g	GB4789.15-2016
Shigella	None Detected	GB4789.5-2012
Salmonella	None Detected	GB4789.4-2016
Staphylococcus aureus	None Detected	GB4789.10-2016

SHELF LIFE AND STORAGE Neotame is stable for at least five years at ambient and dry storage conditions, typically 15°C to 30°C (59°F to 86°F) and 35% to 60% relative humidity, in a well-closed container. It should be stored to avoid high heat and humidity and with the inner bags sealed until ready to use.

PACKAGING 1kg, PE liner with Aluminum foil bag protection, 20bags in a drum

SOLUBILITY Sparingly soluble in water, max. 1.26g/100ml
Very soluble in ethanol, max. 95g/100ml

GMO STATUS This product is processed with non-GMO raw material, conforming to the requirements of legislation on GMOs in force in EC No. 1829/2003 and No. 1830/2003.

KOSHER STATUS Kosher and pareve.

HALAL STATUS Halal and Islamic

ORIGIN The people's republic of China

REGULATORY STATUS AND LABELING. Neotame is approved for use as a sweetener and flavor enhancer in foods and beverages in over 80 countries.

Neotame does not need special labeling for phenylketonuric individuals.
Neotame can be labeled as neotame or E961.

DISCLAIMER : This product complies with the requirements of EU Directives and Regulations in force on foods and food ingredients. Prospective purchasers are advised to conduct their own tests, studies and regulatory review to determine the fitness of HuaSweet Neotme for their particular purposes, product claims or specific applications. Above mentioned information is provided as an indication and therefore cannot bind WuHan HuaSweet Co Ltd.